

## Product Catalog

[Search Again](#)

[Product Information](#) | [Product Specifications](#) | [IPC](#) | [Part Numbers](#)

### Product Information [Back to Top](#)

#### 44

44 is a high activity RA core flux designed for excellent instant wetting action. Although "44" is a RA-based material, the residues are non-corrosive if not cleaned. Per J-STD-004 is classified as ROM1 flux.

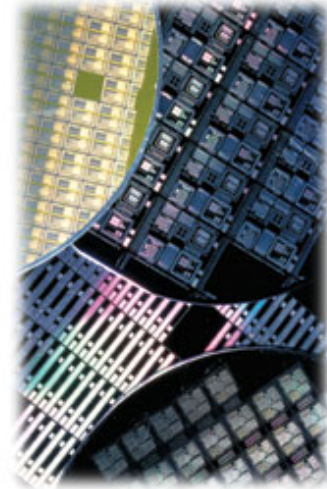
[View Data Sheet \(English\)](#)

[Find MSDS](#)

[Request a Sample](#)

[Request a Quote](#)

Get more from every wafer.



Kester's SE-CURE 7101 bumping paste

### Product Specifications [Back to Top](#)

|                          |           |
|--------------------------|-----------|
| <b>Tensile Strength</b>  | see chart |
| <b>Specific Gravity:</b> | 1.08      |

### IPC [Back to Top](#)

|                                |       |
|--------------------------------|-------|
| <b>Classification:</b>         | ROM1  |
| <b>SIR:</b>                    | Pass  |
| <b>Halide Content:</b>         | 0.44% |
| <b>Copper Plate Corrosion:</b> | M     |
| <b>Copper Mirror:</b>          | M     |

### Part Numbers [Back to Top](#)

| Alloy    | Packaging                       | Americas             | Asia Pacific               | Europe                     | Japan                      | Brazil                     |
|----------|---------------------------------|----------------------|----------------------------|----------------------------|----------------------------|----------------------------|
| Sn63Pb37 | 1 lb., 0.015" diameter, 66 core | 24-6337-0007<br>UPC: | <a href="#">Contact Us</a> | <a href="#">Contact Us</a> | <a href="#">Contact Us</a> | <a href="#">Contact Us</a> |
| Sn63Pb37 | 1 lb., 0.020" diameter, 66 core | 24-6337-0010<br>UPC: | <a href="#">Contact Us</a> | <a href="#">Contact Us</a> | <a href="#">Contact Us</a> | <a href="#">Contact Us</a> |
| Sn63Pb37 | 1 lb., 0.025" diameter, 66 core | 24-6337-0018<br>UPC: | <a href="#">Contact Us</a> | <a href="#">Contact Us</a> | <a href="#">Contact Us</a> | <a href="#">Contact Us</a> |
| Sn63Pb37 | 1 lb., 0.031" diameter, 66 core | 24-6337-0027<br>UPC: | <a href="#">Contact Us</a> | <a href="#">Contact Us</a> | <a href="#">Contact Us</a> | <a href="#">Contact Us</a> |

|             |  |                            |                            |                            |                            |                            |
|-------------|--|----------------------------|----------------------------|----------------------------|----------------------------|----------------------------|
| Sn63Pb37    | 1 lb., 0.040" diameter, 66 core                    | 24-6337-0039<br>UPC:       | <a href="#">Contact Us</a> | <a href="#">Contact Us</a> | <a href="#">Contact Us</a> | <a href="#">Contact Us</a> |
| Sn63pb37    | 1 lb., 0.050" diameter, 66 core                    | 24-6337-0053<br>UPC:       | <a href="#">Contact Us</a> | <a href="#">Contact Us</a> | <a href="#">Contact Us</a> | <a href="#">Contact Us</a> |
| Sn63Pb37    | 1 lb., 0.062" diameter, 66 core                    | 24-6337-0061<br>UPC:       | <a href="#">Contact Us</a> | <a href="#">Contact Us</a> | <a href="#">Contact Us</a> | <a href="#">Contact Us</a> |
| Sn60Pb40    | 1 lb., 0.020" diameter, 66 core                    | 24-6040-0010<br>UPC:       | <a href="#">Contact Us</a> | <a href="#">Contact Us</a> | <a href="#">Contact Us</a> | <a href="#">Contact Us</a> |
| Sn60Pb40    | 1 lb., 0.025" diameter, 66 core                    | 24-6040-0018<br>UPC:       | <a href="#">Contact Us</a> | <a href="#">Contact Us</a> | <a href="#">Contact Us</a> | <a href="#">Contact Us</a> |
| Sn60Pb40    | 1 lb., 0.031" diameter, 66 core                    | 24-6040-0027<br>UPC:       | <a href="#">Contact Us</a> | <a href="#">Contact Us</a> | <a href="#">Contact Us</a> | <a href="#">Contact Us</a> |
| Sn60Pb40    | 1 lb., 0.040" diameter, 66 core                    | 24-6040-0039<br>UPC:       | <a href="#">Contact Us</a> | <a href="#">Contact Us</a> | <a href="#">Contact Us</a> | <a href="#">Contact Us</a> |
| Sn60Pb40    | 1 lb., 0.050" diameter, 66 core                    | 24-6040-0053<br>UPC:       | <a href="#">Contact Us</a> | <a href="#">Contact Us</a> | <a href="#">Contact Us</a> | <a href="#">Contact Us</a> |
| Sn60Pb40    | 1 lb., 0.062" diameter, 66 core                    | 24-6040-0061<br>UPC:       | <a href="#">Contact Us</a> | <a href="#">Contact Us</a> | <a href="#">Contact Us</a> | <a href="#">Contact Us</a> |
| Sn60Pb40    | 1 lb., 0.093" diameter, 66 core                    | 24-6040-0066<br>UPC:       | <a href="#">Contact Us</a> | <a href="#">Contact Us</a> | <a href="#">Contact Us</a> | <a href="#">Contact Us</a> |
| Sn63Pb37    | ¼ or ½ Kg Spool, 0.25-3.00mm,<br>Core 50, 58 or 66 | <a href="#">Contact Us</a> | 44<br>UPC:                 | <a href="#">Contact Us</a> | <a href="#">Contact Us</a> | <a href="#">Contact Us</a> |
| Sn60Pb40    | ¼ or ½ Kg Spool, 0.25-3.00mm,<br>Core 50, 58 or 66 | <a href="#">Contact Us</a> | 44<br>UPC:                 | <a href="#">Contact Us</a> | <a href="#">Contact Us</a> | <a href="#">Contact Us</a> |
| Ag2Sn62Pb36 | ¼ or ½ Kg Spool, 0.25-3.00mm,<br>Core 50, 58 or 66 | <a href="#">Contact Us</a> | 44<br>UPC:                 | <a href="#">Contact Us</a> | <a href="#">Contact Us</a> | <a href="#">Contact Us</a> |

